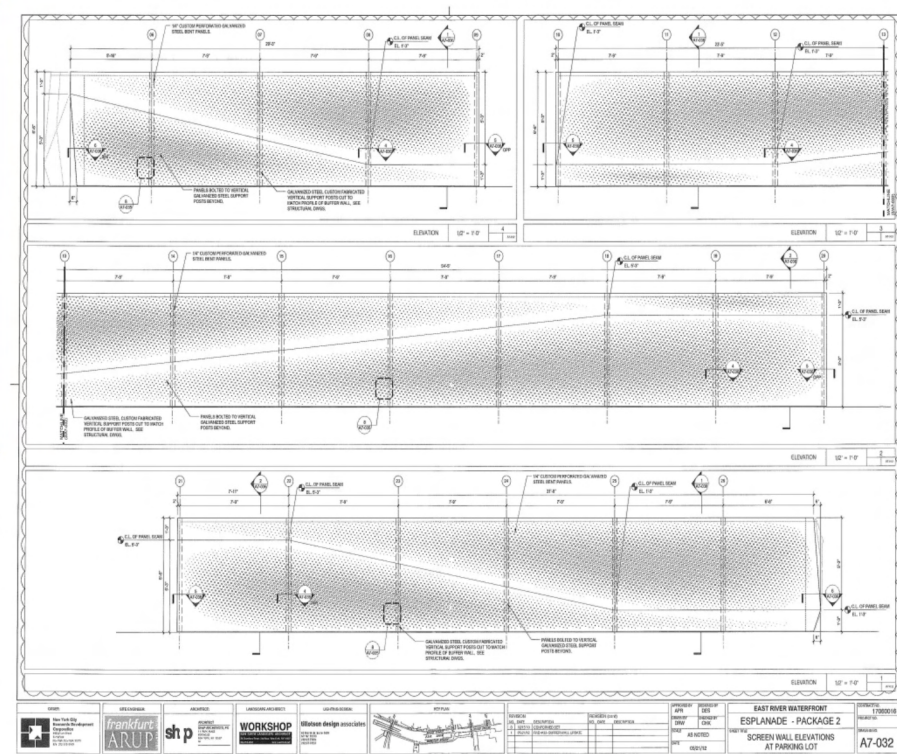


PROJECT NAME: Screen & Buffer Wall
DATE & LOCATION: 2013, Manhattan, NYC.
CUSTOMER: NYC EDC
ARCHITECT: SHOP & HDR
CONTRACTOR: Perfetto
DESCRIPTION: Provided Design for Mfg. & Assm.
 Developed Shop Drawing.
 Fabricate, Galvanize,
 Assembly & ship to Jobsite

A page of the Construction Documents →



NEW PROPOSED MATERIAL: GALVANIZED STEEL (TO MATCH PAVILION)



NEW PROPOSED MATERIAL: GALVANIZED STEEL (TO MATCH PAVILION)

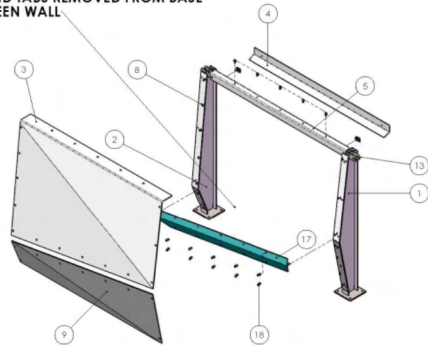


PROJECT NAME:

Screen & Buffer Wall

ITEM NO.	PART NUMBER	Default/QT
1	SCREEN WALL POST	1
2	SCREEN WALL POST	1
3	SW PANEL 1-U	1
4	BENT PLATE	1
5	C-CHANNEL 3.5	1
7	Pipe Mounting Hardware-A	2
8	Mounting Hardware-A	23
9	SW PANEL 1-L	1
11	C-CHANNEL SUPPORT	2
17	T-SHAPE 2-3	1

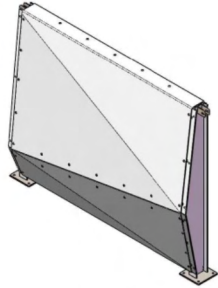
*T-SHAPE SUPPORT ADDED TO TIE UPPER AND LOWER PANELS TOGETHER
 *POST AND TABS REMOVED FROM BASE OF SCREEN WALL



*PANEL ASSEMBLY TYPICAL FOR ALL SECTIONS AT SCREEN WALL AREA

*CONDUIT INSTALLATION TO BE COORDINATED BY CONTRACTOR

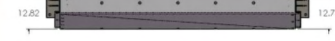
DATE	USER	DESCRIPTION
12/10/13	PERFETTO	SCREEN WALL SECTION 1-2
	MEC, RPO	SCREEN WALL



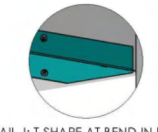
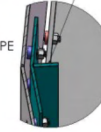
SCALE 1 : 20

DEPTH OF T-SHAPE SUPPORT DECREASED BY 2"

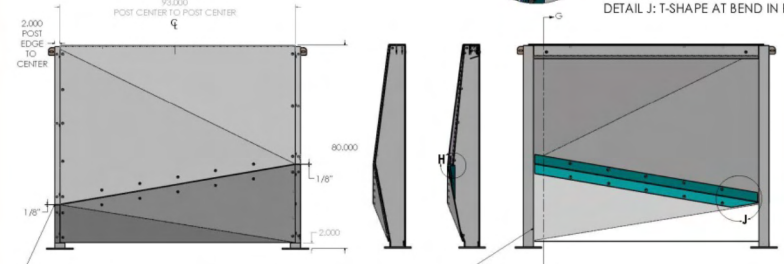
*PANEL ASSEMBLY TYPICAL FOR ALL CENTRAL SECTIONS AT BUFFER AREA



DETAIL H: BENT T-SHAPE



DETAIL J: T-SHAPE AT BEND IN PANEL



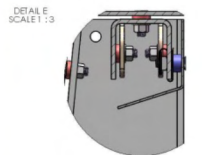
CONSISTENT 1/8" REVEAL AT PANEL SEAM, TYP.

POST AND TABS REMOVED FROM BASE OF SCREEN WALL

DATE	USER	DESCRIPTION
12/10/13	PERFETTO	SCREEN WALL SECTION 1-2
	MEC, RPO	SCREEN WALL

LEFT SIDE SCREEN WALL POST

.250" SEPERATION BETWEEN PANELS AND SUPPORTS TYPICAL

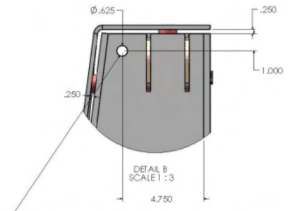


DIMENSION AND ANGLE OF LIGHTING COVER MATCHES SCREEN WALL MOCKUP, 03/14/14; TYP.

C-CHANNEL BENT PLATE CONNECTION
 CUSTOM HARDWARE CLIP USED TO MOUNT BENT PLATE

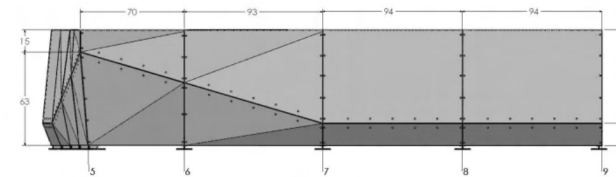
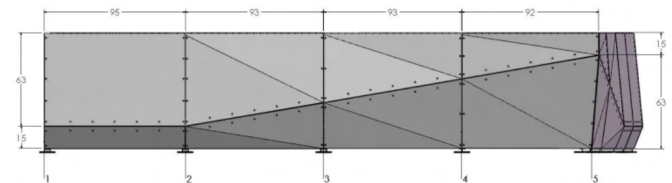


RIGHT SIDE SCREEN WALL POST



FINAL DIMENSIONS FOR CONDUIT HOLE WILL NEED TO BE PROVIDED BY CONTRACTOR.

DATE	USER	DESCRIPTION
12/10/13	PERFETTO	SCREEN WALL SECTION 1-2
	MEC, RPO	SCREEN WALL



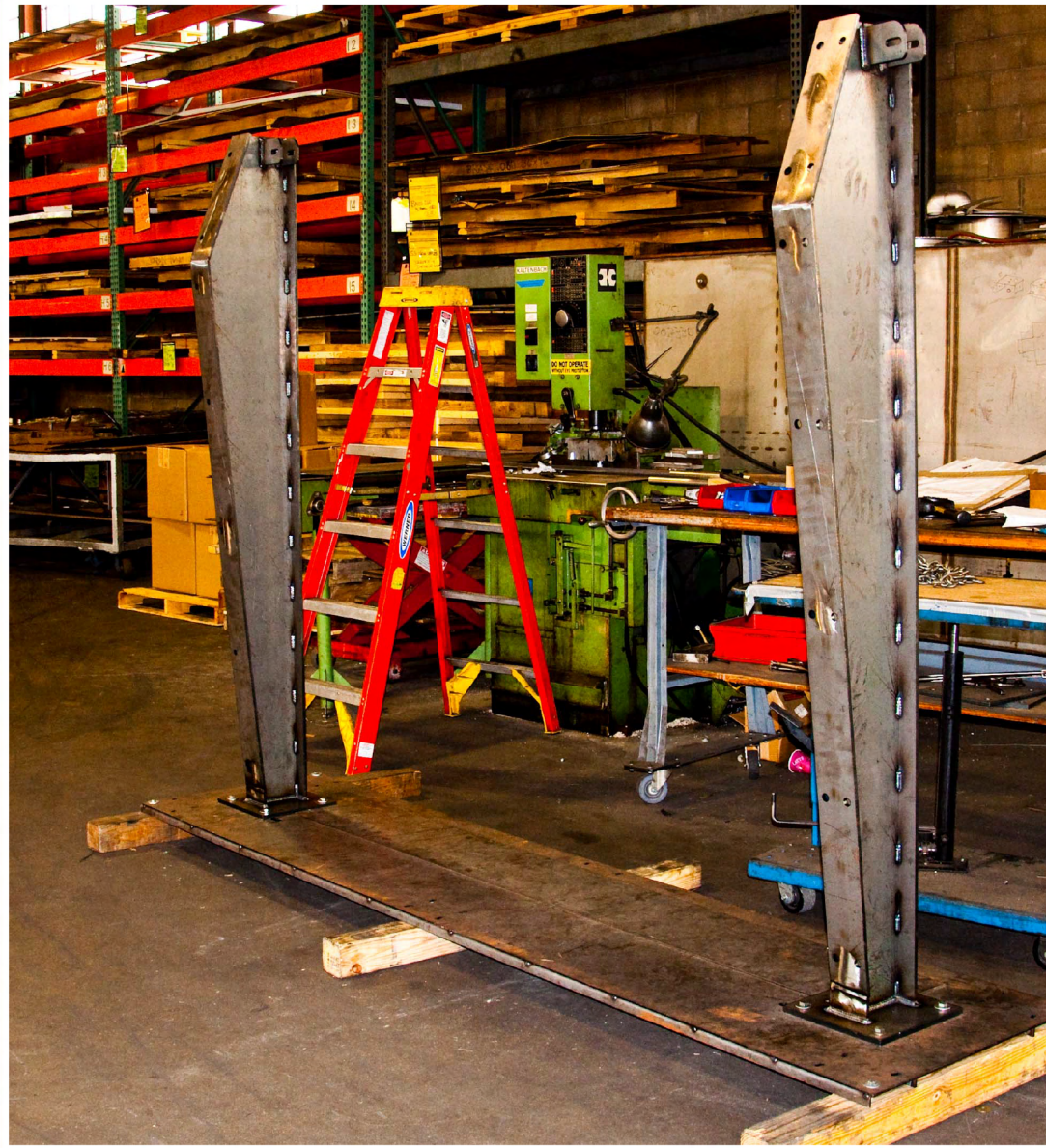
ALL DIMENSIONS AS PER 140122_TALL SCREEN FINAL GEOMETRY

POST/PANEL SECTIONS 1-9

DATE	USER	DESCRIPTION
12/10/13	PERFETTO	SCREEN WALL SECTION 1-2
	MEC, RPO	SCREEN WALL

PROJECT NAME:

Screen & Buffer Wall





Since these were large fences, we had to get large plates that measured 144" x 72" sheets to fabricate from. After the front plates were laser cut the metal showed stresses at the edges as above.



We made a few attempts at finding solutions by clamping the edges together. The front bolts were changed to flathead screws so that the front had a more aesthetic look. Eventually we found the solution.

PROJECT NAME:

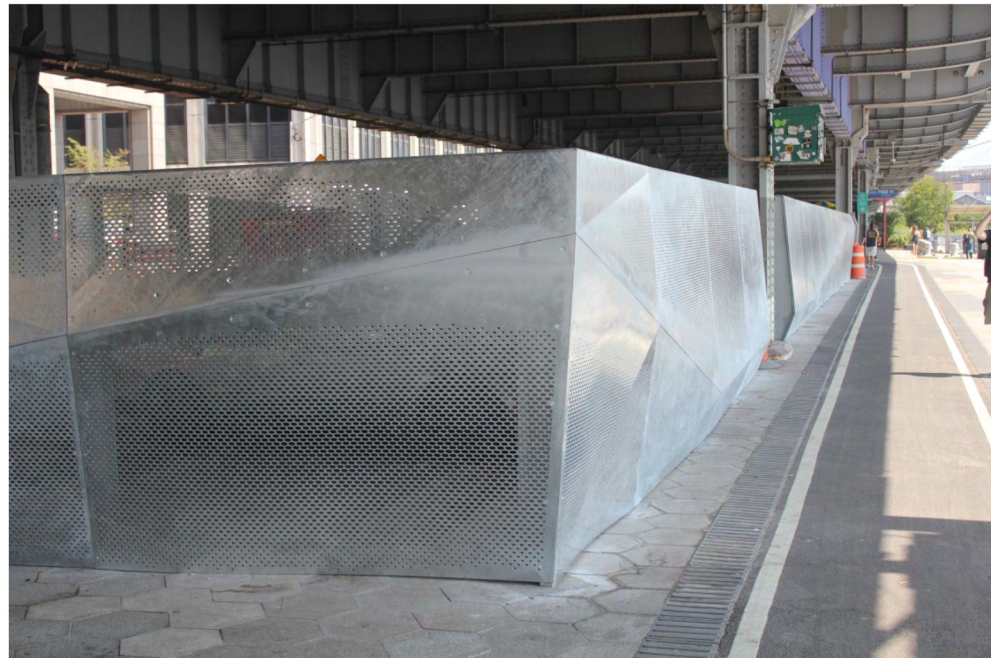
Screen & Buffer Wall



Mockup for review



Inside corner view



Finished project covers parking lot for FDNY



PROJECT NAME:

Screen & Buffer Wall



Finished project covers parking lot for FDNY